

CE^{VO}
FO^{RA}

SECTORFOTO 2014





TABAKSECTOR

Beschrijving van de activiteiten in de sector

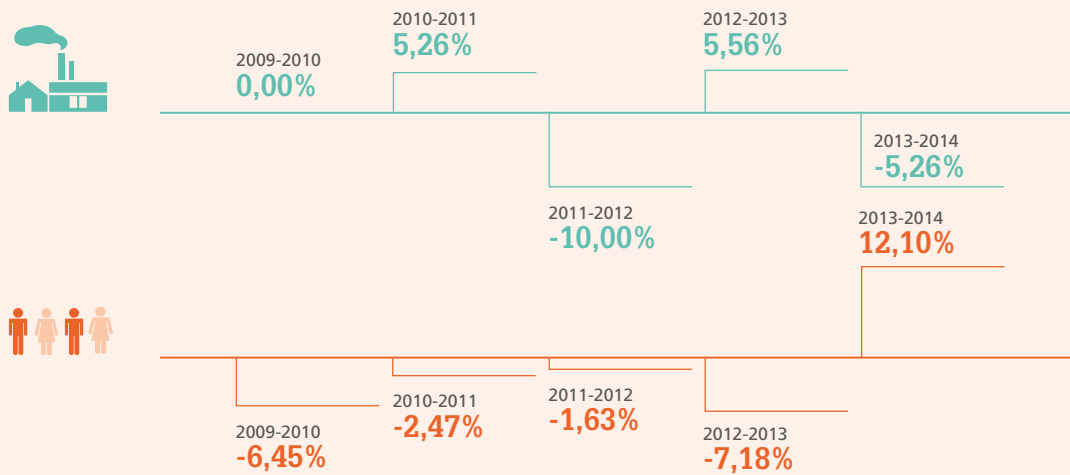
Nace- Bel 2008	Beschrijving
12	Vervaardiging van tabaksproducten

Kerncijfers

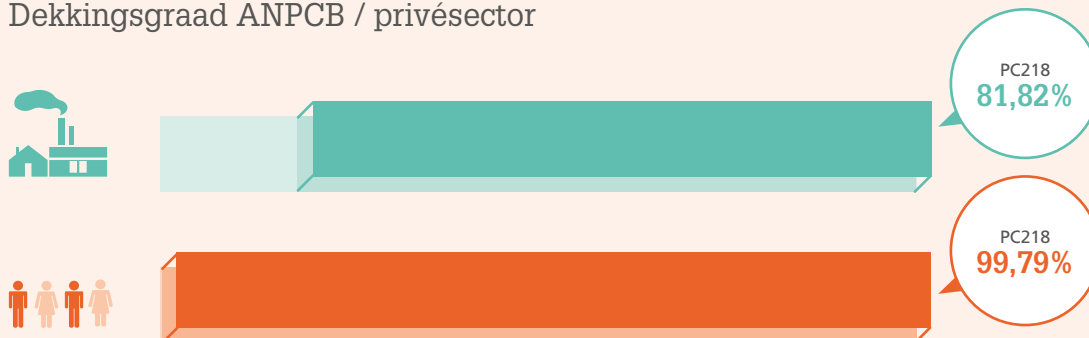
Aantal ondernemingen en bedienden: 2009 – 2014

	2009	2010	2011	2012	2013	2014
	19	19	20	18	19	18
	605	566	552	543	504	565

Evolutie van het aantal ondernemingen en bedienden tussen 2009 en 2014



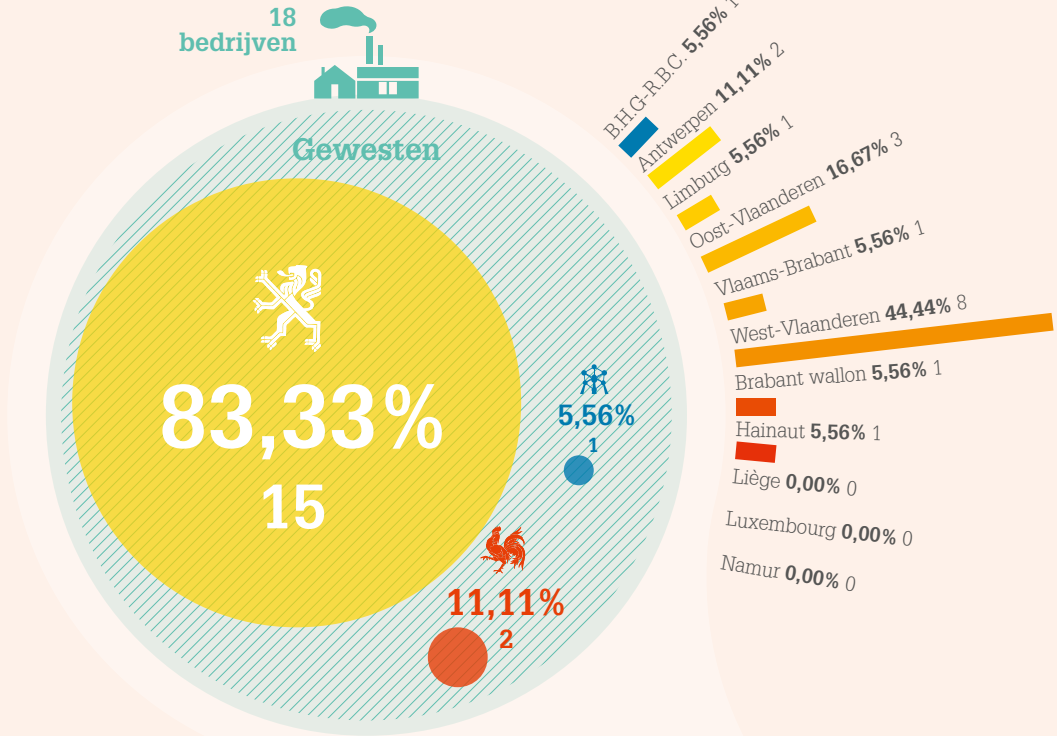
Dekkingsgraad ANPCB / privésector



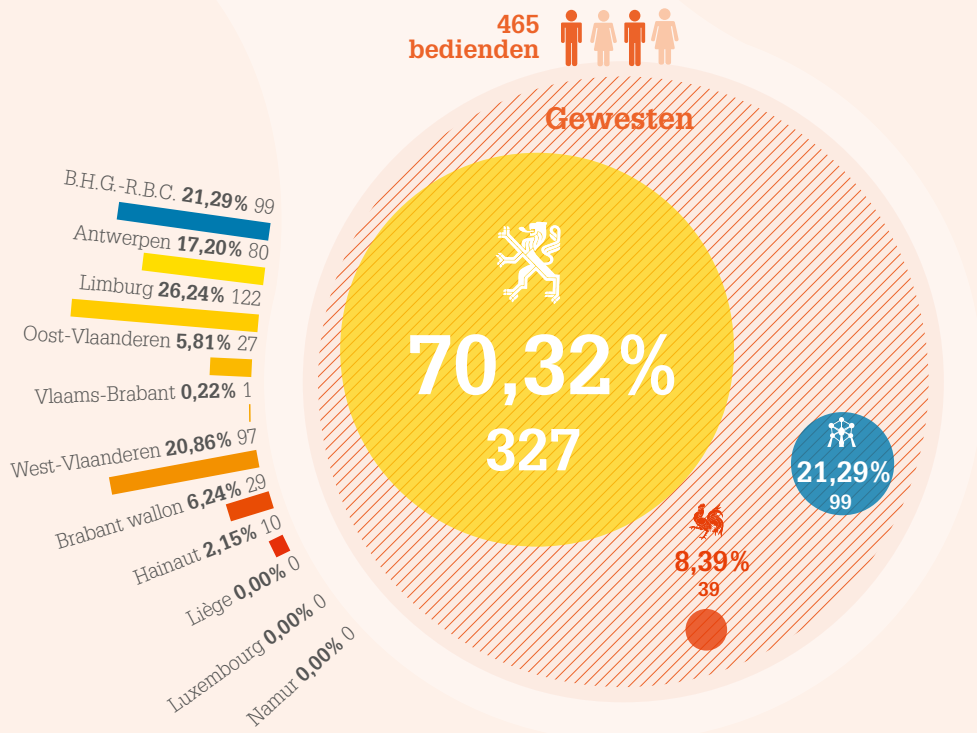
Profiel van de bedrijven en de bedienden

Geografische spreiding


18
bedrijven












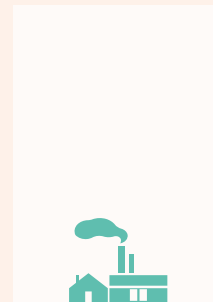
465
bedienden



Verdeling van de bedrijven volgens het aantal werknemers

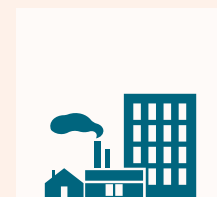


	<5	3	16,67%
	5 - 9	2	11,11%
	10 - 19	2	11,11%
	20 - 49	4	22,22%
	50 - 99	3	16,67%
	100 - 199	2	11,11%
	200 - 499	1	5,56%
	500 - 999	1	5,56%
	1000 en meer	-	0,00%
Totaal		18	100%



KMO (<50 )

61%
11 bedrijven

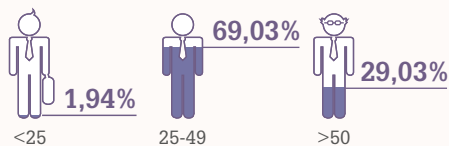


Grote bedrijven

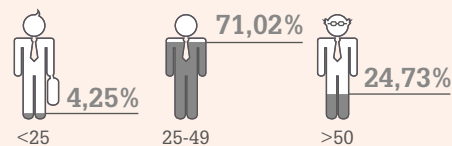
39%
7 bedrijven

Verdeling per leeftijd

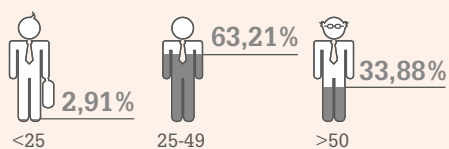
BEDIENDEN PC 218 TABAKSECTOR



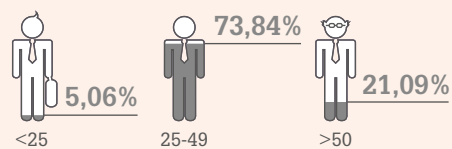
BEDIENDEN PC 218 PRIMAIRE EN SECUNDAIRE SECTOREN



ARBEIDERS EN BEDIENDEN TABAKSECTOR

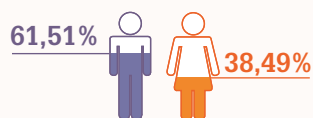


BEDIENDEN PC 218 ALLE SECTOREN

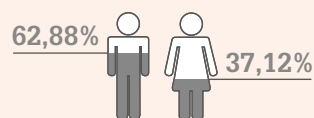


Verdeling per geslacht

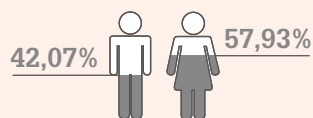
**BEDIENDEN PC 218
TABAKSECTOR**



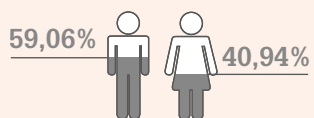
**BEDIENDEN PC 218
PRIMAIRE EN SECUNDAIRE SECTOREN**



**ARBEIDERS EN BEDIENDEN
TABAKSECTOR**

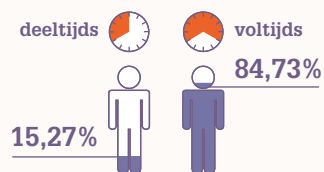


**BEDIENDEN PC 218
ALLE SECTOREN**

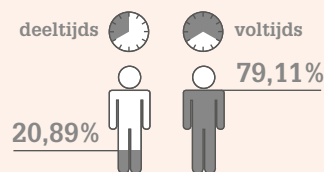


Verdeling per type prestatie

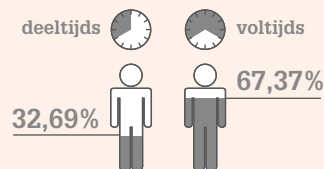
**BEDIENDEN PC 218
TABAKSECTOR**



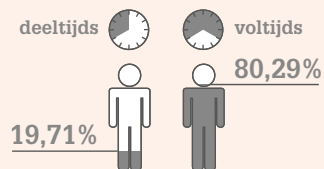
**BEDIENDEN PC 218
PRIMAIRE EN SECUNDAIRE SECTOREN**



**ARBEIDERS EN BEDIENDEN
TABAKSECTOR**



**BEDIENDEN PC 218
ALLE SECTOREN**



Lijst van de 17 grootste bedrijven



	Bedrijven	nace	Provincie	Grootte van het bedrijf	Aantal bedienden
1	Scan. Tobacco Group Lummen nv	12000	Limburg	500-1000	122
2	British American Tobacco Belgium nv	12000	Vlaams Brabant	100-199	99
3	Agio Cigars Belgium nv	12000	Antwerpen	200-499	64
4	Gryson nv	12000	West-Vlaanderen	100-199	42
5	J. Cortes Cigars nv	12000	West-Vlaanderen	50-99	37
6	Torrekens Tobacco Belgium sprl	12000	Waals Brabant	20-49	29
7	Scandinavion Tobacco Group Wuustwezel nv	12000	Antwerpen	50-99	16
8	Twist nv	12000	Oost-Vlaanderen	20-49	14
9	Flandria - Tabak, Sigaren En Sigarettenfabriek nv	12000	Oost-Vlaanderen	20-49	12
10	Sifaco Benelux Sa	12000	Henegouwen	20-49	10
11	Firma Nollet Bvba	12000	West-Vlaanderen	5-9	6
12	Sigarettenfabriek Neos nv	12000	West-Vlaanderen	50-99	4
13	Asbjornsen Belgium bvba	12000	West-Vlaanderen	10-19	4
14	Nv Tabaksbedrijf Stubbe	12000	West-Vlaanderen	10-19	2
15	Fabrieken Van Der Cruyssen nv	12000	Oost-Vlaanderen	<5	1
16	Casteleyn Walter	12000	West-Vlaanderen	<5	1
17	Notebaert Produktie nv	12000	West-Vlaanderen	5-9	1

Lokalisatie van de bedienden en de grootste bedrijven van de sector

